

Have You Seen This Tick?

The Lone Star Tick

(Species: *Amblyomma americanum*)



Image on left: Adult female (left), adult male (center), nymph (right); photo credit (here and below): Emily Struckhoff/UIUC INHS Medical Entomology Lab
Image on right: Clutch of larvae trapped on lint roller paper; photo credit: Holly Tuten/UIUC INHS Medical Entomology Lab

Have You Seen This Tick?

The Lone Star Tick

(Species: *Amblyomma americanum*)



Image on left: Adult female (left), adult male (center), nymph (right); photo credit (here and below): Emily Struckhoff/UIUC INHS Medical Entomology Lab
Image on right: Clutch of larvae trapped on lint roller paper; photo credit: Holly Tuten/UIUC INHS Medical Entomology Lab

Larvae

Nymphs

Adults

Jan. Feb. Mar. Apr. May Jun. Jul. Aug. Sep. Oct. Nov. Dec.

Illinois Seasonal Activity - Lone star tick

Want to see where in Illinois we've found it?

Check out the maps:

<https://arccg.is/15fDSO>



Larvae

Nymphs

Adults

Jan. Feb. Mar. Apr. May Jun. Jul. Aug. Sep. Oct. Nov. Dec.

Illinois Seasonal Activity - Lone star tick

Want to see where in Illinois we've found it?

Check out the maps:

<https://arccg.is/15fDSO>



Behavior: "Sit & Wait" and "Pursuit" – Rest in soil or wait on ankle to thigh-high vegetation for hosts to pass, or run to hosts they detect (using cues like breath, heat, or vibration)

Distribution: Most dense in southern and central Illinois but increasing northwards, expected to become common statewide

Habitat: Wide range – from forest interior, to regularly flooded areas, to grassy edges of forests and fields with direct sun

Associated Human Diseases: Alpha-gal Syndrome (aka "red meat allergy"), Ehrlichiosis, Heartland virus disease, STARI (Southern Tick-Associated Rash Illness)



Want a free tick identification in Illinois?

See them in real-life scale!



Female



Male



Nymph



Larva

<https://medical-entomology.inhs.illinois.edu/research/free-tick-identifications/>

Handout created by: Holly C. Tuten © June 2023. Do not reproduce without permission and attribution.



Behavior: "Sit & Wait" and "Pursuit" – Rest in soil or wait on ankle to thigh-high vegetation for hosts to pass, or run to hosts they detect (using cues like breath, heat, or vibration)

Distribution: Most dense in southern and central Illinois but increasing northwards, expected to become common statewide

Habitat: Wide range – from forest interior, to regularly flooded areas, to grassy edges of forests and fields with direct sun

Associated Human Diseases: Alpha-gal Syndrome (aka "red meat allergy"), Ehrlichiosis, Heartland virus disease, STARI (Southern Tick-Associated Rash Illness)



Want a free tick identification in Illinois?

See them in real-life scale!



Female



Male



Nymph



Larva

<https://medical-entomology.inhs.illinois.edu/research/free-tick-identifications/>

Handout created by: Holly C. Tuten © June 2023. Do not reproduce without permission and attribution.



Have You Seen This Tick?

The Gulf Coast Tick

(Species: *Amblyomma maculatum*)



Image: Adult female (left), adult male (right); photo credit (here and below): Emily Struckhoff/UIUC INHS Medical Entomology Lab

Adults

Jan. Feb. Mar. Apr. May Jun. Jul. Aug. Sep. Oct. Nov. Dec.

Illinois Seasonal Activity - Gulf Coast tick

Want to see where in Illinois we've found it?

Check out the maps:

<https://arcg.is/15fDSO>



Behavior: "Sit & Wait" and "Pursuit" – Rest in soil or wait on calf to chest-high vegetation for hosts to pass, or run to hosts they detect (using cues like breath, heat, or vibration)

Distribution: Most often found in highly localized areas in southern and central Illinois, and is more common in southern IL than central, but likely invading northwards and can be found in northeast Illinois

Habitat: Open habitats with minimal to no canopy cover, like prairie, mowed fields, fallow fields undergoing succession to forest, roadside ditches, retention ponds

Associated Human Diseases: *Rickettsia parkeri*-Rickettsiosis (a spotted fever group Rickettsiosis); sometimes called "Tidewater Spotted Fever" or "American Bouttonneuse Fever"



Want a free tick identification in Illinois?

See them in real-life scale!



Female



Male

<https://medical-entomology.inhs.illinois.edu/research/free-tick-identifications/>

Handout created by: Holly C. Tuten © June 2023. Do not reproduce without permission and attribution.



Have You Seen This Tick?

The Gulf Coast Tick

(Species: *Amblyomma maculatum*)



Image: Adult female (left), adult male (right); photo credit (here and below): Emily Struckhoff/UIUC INHS Medical Entomology Lab

Adults

Jan. Feb. Mar. Apr. May Jun. Jul. Aug. Sep. Oct. Nov. Dec.

Illinois Seasonal Activity - Gulf Coast tick

Want to see where in Illinois we've found it?

Check out the maps:

<https://arcg.is/15fDSO>



Behavior: "Sit & Wait" and "Pursuit" – Rest in soil or wait on calf to chest-high vegetation for hosts to pass, or run to hosts they detect (using cues like breath, heat, or vibration)

Distribution: Most often found in highly localized areas in southern and central Illinois, and is more common in southern IL than central, but likely invading northwards and can be found in northeast Illinois

Habitat: Open habitats with minimal to no canopy cover, like prairie, mowed fields, fallow fields undergoing succession to forest, roadside ditches, retention ponds

Associated Human Diseases: *Rickettsia parkeri*-Rickettsiosis (a spotted fever group Rickettsiosis); sometimes called "Tidewater Spotted Fever" or "American Bouttonneuse Fever"



Want a free tick identification in Illinois?

See them in real-life scale!



Female



Male

<https://medical-entomology.inhs.illinois.edu/research/free-tick-identifications/>

Handout created by: Holly C. Tuten © June 2023. Do not reproduce without permission and attribution.



Have You Seen This Tick?

The Blacklegged Tick

(Species: *Ixodes scapularis*)

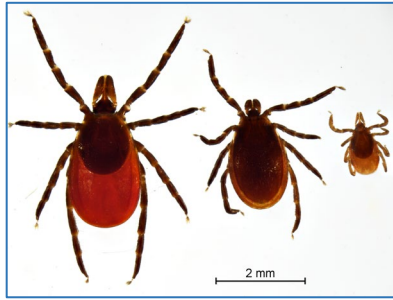


Image: Adult female (left), adult male (center), nymph (right); photo credit (here and below): Emily Struckhoff/UIUC INHS Medical Entomology Lab

Nymphs

Adults

Adults

Jan. Feb. Mar. Apr. May Jun. Jul. Aug. Sep. Oct. Nov. Dec.

Illinois Seasonal Activity - Blacklegged tick, IL

Want to see where in Illinois we've found it?

Check out the maps: <https://arcg.is/15fDSO>



Behavior: "Sit & Wait"—Wait on ankle to thigh-high vegetation for hosts to pass

Distribution: Throughout Illinois with uneven distribution - nymphs in southern Illinois may encounter large mammals less often than those in north because of different host-seeking behavior

Habitat: Strongly tied to humid microclimates like areas with sandy/loamy soils and full tree canopy, from forest interior to trail edge, or suburban woodlots and brush piles in yards

Associated Human Diseases: Anaplasmosis, Babesiosis, Lyme Disease, *Borrelia miyamotoi*-disease (hard tick relapsing fever), Ehrlichiosis, Powassan virus disease



Want a free tick identification in Illinois?

See them in real-life scale!



Female



Male



Nymph

<https://medical-entomology.inhs.illinois.edu/research/free-tick-identifications/>

Handout created by: Holly C. Tuten © June 2023. Do not reproduce without permission and attribution.



Have You Seen This Tick?

The Blacklegged Tick

(Species: *Ixodes scapularis*)

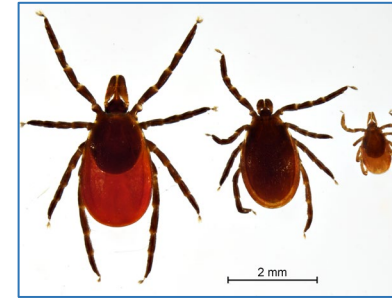


Image: Adult female (left), adult male (center), nymph (right); photo credit (here and below): Emily Struckhoff/UIUC INHS Medical Entomology Lab

Nymphs

Adults

Adults

Jan. Feb. Mar. Apr. May Jun. Jul. Aug. Sep. Oct. Nov. Dec.

Illinois Seasonal Activity - Blacklegged tick, IL

Want to see where in Illinois we've found it?

Check out the maps: <https://arcg.is/15fDSO>



Behavior: "Sit & Wait"—Wait on ankle to thigh-high vegetation for hosts to pass

Distribution: Throughout Illinois with uneven distribution - nymphs in southern Illinois may encounter large mammals less often than those in north because of different host-seeking behavior

Habitat: Strongly tied to humid microclimates like areas with sandy/loamy soils and full tree canopy, from forest interior to trail edge, or suburban woodlots and brush piles in yards

Associated Human Diseases: Anaplasmosis, Babesiosis, Lyme Disease, *Borrelia miyamotoi*-disease (hard tick relapsing fever), Ehrlichiosis, Powassan virus disease



Want a free tick identification in Illinois?

See them in real-life scale!



Female



Male



Nymph

<https://medical-entomology.inhs.illinois.edu/research/free-tick-identifications/>

Handout created by: Holly C. Tuten © June 2023. Do not reproduce without permission and attribution.



Have You Seen This Tick?

The American Dog Tick

(Species: *Dermacentor variabilis*)

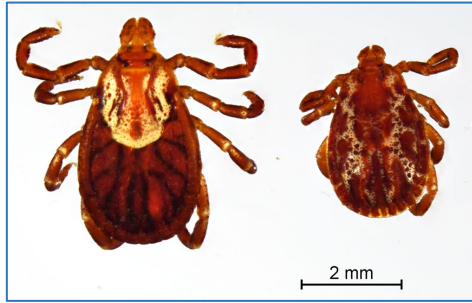


Image: Adult female (left), adult male (right); photo credit (here and below): Emily Struckhoff/UIUC INHS Medical Entomology Lab

Adults

Jan. Feb. Mar. Apr. May Jun. Jul. Aug. Sep. Oct. Nov. Dec.

Illinois Seasonal Activity - American dog tick

Want to see where in Illinois we've found it?

Check out the maps:

<https://arcg.is/15fDSO>



Behavior: "Sit & Wait" – Wait on ankle to thigh-high vegetation for hosts to pass but can also climb walls and structures after emerging or display a "mobbing" behavior that causes them to appear in clumps on objects in the environment

Distribution: Considered broadly-distributed throughout Illinois

Habitat: Wooded areas, forest/field edges, overgrown abandoned lots, fallow fields, roadsides, grassy edges of hiking trails, scrub along rivers/creeks and typically found near the interior and exterior of the forest edge

Associated Human Diseases: Rocky Mountain Spotted Fever, Tularemia



Want a free tick identification in Illinois?

See them in real-life scale!



Female



Male

<https://medical-entomology.inhs.illinois.edu/research/free-tick-identifications/>

Handout created by: Holly C. Tuten © June 2023. Do not reproduce without permission and attribution.



Have You Seen This Tick?

The American Dog Tick

(Species: *Dermacentor variabilis*)

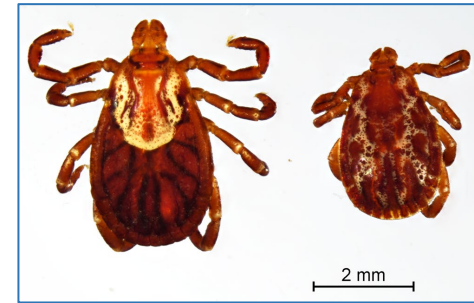


Image: Adult female (left), adult male (right); photo credit (here and below): Emily Struckhoff/UIUC INHS Medical Entomology Lab

Adults

Jan. Feb. Mar. Apr. May Jun. Jul. Aug. Sep. Oct. Nov. Dec.

Illinois Seasonal Activity - American dog tick

Want to see where in Illinois we've found it?

Check out the maps:

<https://arcg.is/15fDSO>



Behavior: "Sit & Wait" – Wait on ankle to thigh-high vegetation for hosts to pass but can also climb walls and structures after emerging or display a "mobbing" behavior that causes them to appear in clumps on objects in the environment

Distribution: Considered broadly-distributed throughout Illinois

Habitat: Wooded areas, forest/field edges, overgrown abandoned lots, fallow fields, roadsides, grassy edges of hiking trails, scrub along rivers/creeks and typically found near the interior and exterior of the forest edge

Associated Human Diseases: Rocky Mountain Spotted Fever, Tularemia



Want a free tick identification in Illinois?

See them in real-life scale!



Female



Male

<https://medical-entomology.inhs.illinois.edu/research/free-tick-identifications/>

Handout created by: Holly C. Tuten © June 2023. Do not reproduce without permission and attribution.

